

90 Fenchurch Street
London EC3

9,406 – 20,557 Sq Ft
Plug & Play Offices To Let



UP TO 20,557 SQ FT PLUG AND PLAY CITY OFFICE SPACE

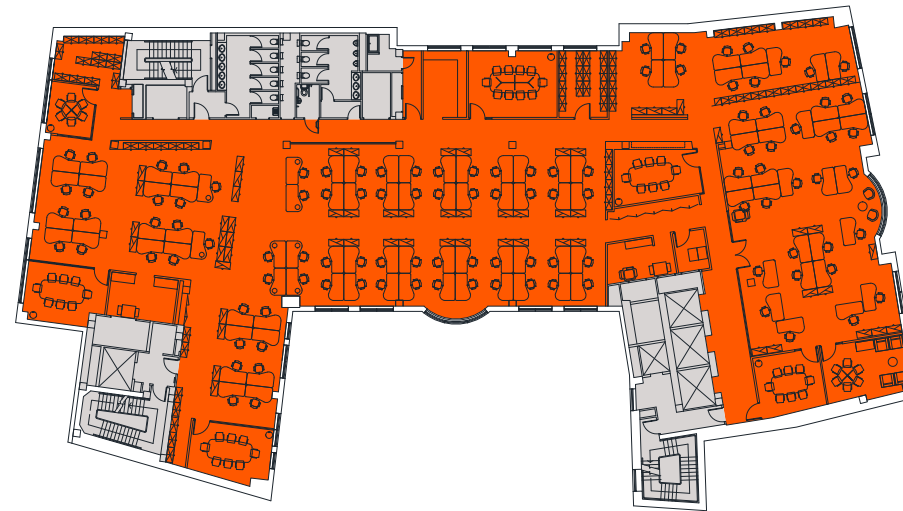


SPACIOUS

Both floors are fully fitted out and ready for immediate occupation.

AVAILABILITY

Floor	Sq Ft	Sq M
5th	9,406	873.8
4th	11,151	1,036.0
Total	20,557	1,909.8



FOURTH FLOOR EXISTING FIT OUT

Open Plan Desks	111
8 Person Meeting Rooms	04
6 Person Meeting Rooms	02
10 Person Meeting Rooms	01
Kitchen / Breakout	01
Total Occupancy	111
Occupancy Ratio	1:8 Sq M



For indicative purposes only. Not to scale.



SPECIFICATION



'Plug & Play'
fitted offices



4 pipe fan-coil air
conditioning



3 passenger lifts
and 1 goods lift



Loading
bay



Raised access
flooring



Metal tiled
suspended ceiling



24 hour
security

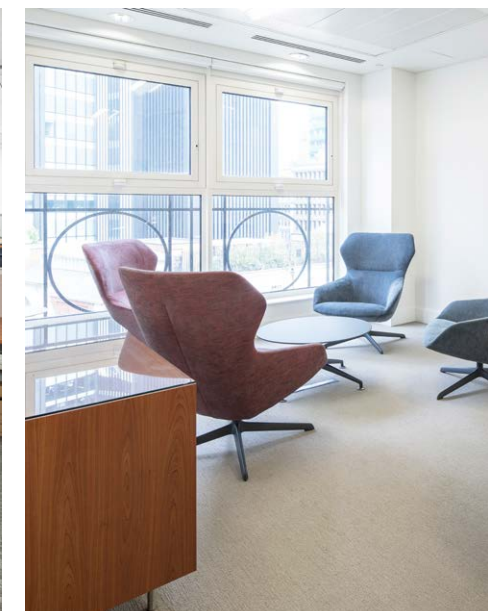
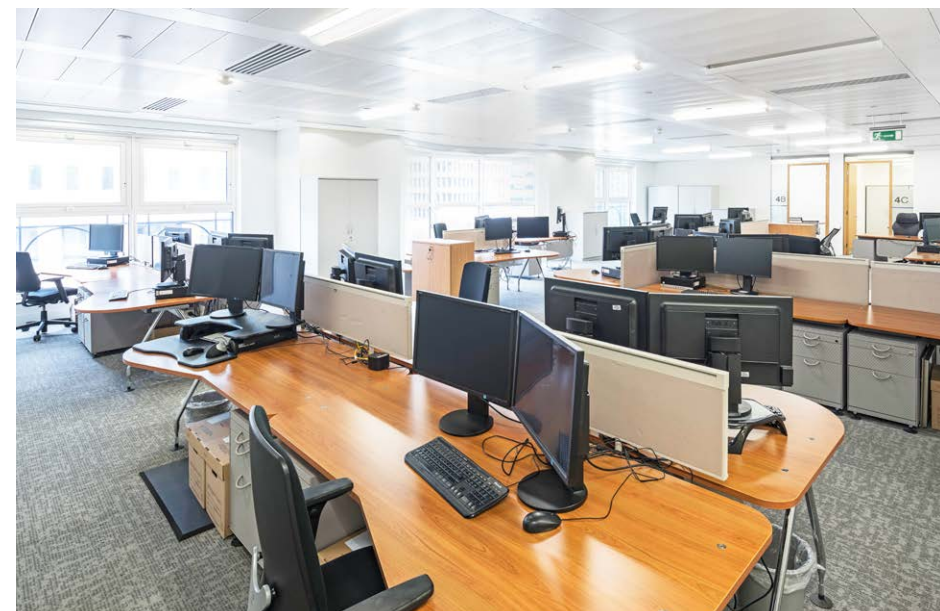


Contemporary
reception

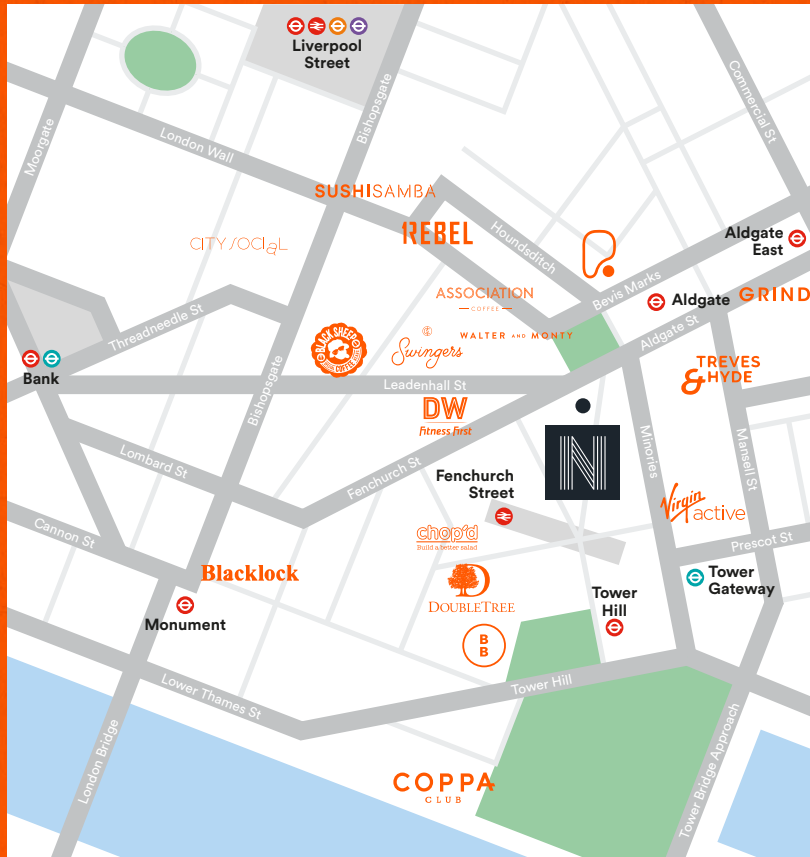


Showers and
bike racks

HIGHLY SPECIFIED



GREAT LOCATION



LOCAL AREA

90 Fenchurch Street is located in the City of London, within the heart of the established insurance district of EC3 and surrounded by an abundance of local amenities.



CONNECTED

Fenchurch St

02



Tower Hill

04



Bank

09



Aldgate

02



Tower Gateway

05



Liverpool St

09



All journey times in minutes walk from the building.
Source: TfL.

VIEWINGS

Strictly through joint sole letting agents.

Peter Gray
07765 220 528
peter.gray@knightfrank.com



Jack Wells
07741 900 431
jw@newtonperkins.com



TERMS

Upon application.

Harriet Oury
07976 730 101
harriet.oury@knightfrank.com

Christopher Sutcliffe
07970 831 250
crs@newtonperkins.com

MISPRESENTATION ACT 1967 AND PROPERTY MISDESCRIPTION ACT 1991. Particulars These particulars are not an offer on contract, nor part of one. You should not rely on statements made by Knight Frank LLP in these particulars or by word of mouth or in writing ("information") as being factually accurate about the property, its condition or its value. Knight Frank LLP hasn't any authority to make any representations about the property, and accordingly any information given is entirely without responsibility on the part of the agents, seller(s) or lessor(s). 2. Photos etc The photographs show only certain parts of the property as they appeared at the time they were taken. Areas, measurements and distances given are approximate only. 3. Regulations etc Any reference to alterations to, or use of, any part of the property does not mean that any necessary planning, building regulations or other consent has been obtained. A buyer or lessee must find about by inspection or in other ways that these matters have been properly dealt with and that all information is correct. 4. VAT The VAT position of the building may change without notice. The Code of Leasing Premises in England & Wales recommends you seek professional advice before agreeing a business tenancy. Details available from - www.lettingbusinesspremises.co.uk